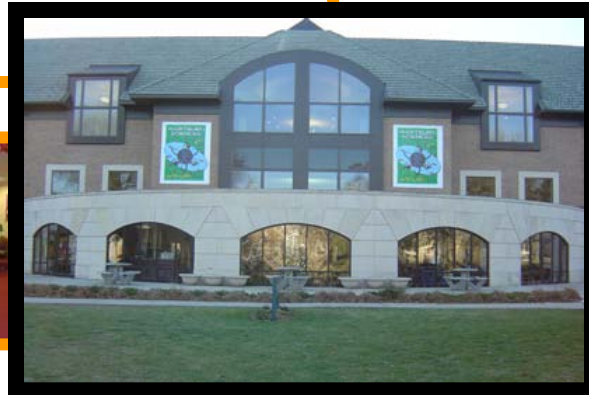


First-Year Experience Calendar

Vogel Library's mission is to educate information-literate lifelong learners.



The Pathways Center is dedicated to offering comprehensive, individualized guidance and support to assist students as they identify and achieve their academic, personal, and professional goals.

Don't forget to stop by Pathways or to check www.wartburg.edu/pathways/si.html to see if your class is supported by Supplemental Instruction. SI group study sessions will help you with advice on how to prepare for class and tests and about how to learn more effectively and efficiently. Plus it's more fun to study in a group with an SI leader who can help!

Wondering about the library's hours? That and other useful information (how to get help, available databases, locating research guides, and much more) can be found on the Vogel Library webpage. Check it out to keep current: www.library.wartburg.edu

You can also access password protected library resources while away from campus by entering your Wartburg username and password when prompted.

September 2011

Tips of the Month:

Don't miss the Involvement Fair during Orange EXCEleration on Sept. 5 at 3:30 PM on the campus mall. Learn about Student Senate, ETK and over 100 other student organizations!



Unlock the power of Vogel Library! Your student ID is your library card and gives you access to check out over 258,000 books, journals, DVDs, scores, CDs, and much more. It also allows you to print at the library.

SUNDAY	MONDAY	TUESDAY	WEDNESDAY	THURSDAY	FRIDAY	SATURDAY
Vogel Library's mission is to educate information-literate lifelong learners. That's you! Information literacy is the ability to find, evaluate, and use information effectively and ethically. You'll experience class assignments that require you to think critical thinking about how you use information to support and extend your learning. Don't forget: Wartburg's librarians can be partners in helping you to achieve academic success.				1 ORANGE EXCEleration Knighting Ceremony 2:30 PM	2 ORANGE EXCEleration	3 ORANGE EXCEleration
4 ORANGE EXCEleration	5 ORANGE EXCEleration	6 ORANGE EXCEleration Convocation 10:15 AM	7 Fall Classes Begin	8	9	10
11	12 First 7-week courses: Last day to drop w/o "W" or to add	13	14	15 Full-term courses: Last day to drop w/o "W" or to add	16	17
18	19	20 Convocation 11:30 AM	21	22	23 Family Weekend	24 Family Weekend
25 Family Weekend	26	27	28	29	30 First 7-week courses: Last day to declare P/D/F or withdraw with a "W"	

October 2011

SUNDAY	MONDAY	TUESDAY	WEDNESDAY	THURSDAY	FRIDAY	SATURDAY
<p>Any bets on when Outfly will be? Our money's on sometime during the week of October 2 or the week of October 9! However, don't COUNT on it! Do your homework anyway! © Remember: You don't <i>have</i> to go to class. <i>But</i> professors don't <i>have</i> to pass you! You are responsible for your choices and will have to take the consequences. Faculty are willing to help, but they expect YOU to initiate contact if you need assistance or if you missed something.</p>						1
2	3	4	5 Incompletes from Winter/May/Summer 2011 due to instructors	6	7	8
9	10	11	12	13 HOMECOMING •Kastle Kapers •Coronation •Convocation @ 11:30	14 HOMECOMING •Kastle Kapers	15 HOMECOMING •Parade and Game •Renaissance Fair
16 HOMECOMING	17	18	19	20	21 First 7-week courses end	22
23 HOMECOMING	24 2 nd seven-week courses begin	25	26 Full term courses: Last day to declare P/D/F	27 Fall Break Begins 7:45 am	28 Fall Break	29 Fall Break Library & Pathways Closed
30 Fall Break Library Opens @ 6:30 PM	31 Classes Resume 7:45 AM 2 nd seven-week courses: Last day to drop w/o a "W" or to add	<p>Missing your pet, brother, sweetie, mom's home cooking, or your own room? Choose one or two activities and get involved at Wartburg! Check out wartburg.edu/orgs Talking can also help. Visit with your RA, advisor, or call Counseling Services at x8596.</p>				

Tips of the Month:

Pathways Center staff can help with time management and study skills. Use your Wartburg planner and your course syllabi. Talk with your advisor.



Having a tough time finding sources for a paper? Phone, Meebo, or stop by the reference desk at the library for immediate help OR sign up to have a 1-on-1 meeting (information consultation) with a librarian. It will save you tons of time in the long run.

November 2011

SUNDAY	MONDAY	TUESDAY	WEDNESDAY	THURSDAY	FRIDAY	SATURDAY
--------	--------	---------	-----------	----------	--------	----------

When teachers tell students they should study 2-3 hours outside of class for every hour in class, they're exaggerating, but only by about 15 minutes! Remember, just because you don't have a paper or assignment DUE, doesn't mean you don't have to study!

Read, review, remember! Texts often are NOT reviewed in class but are still part of exam questions.

		1 Convocation 11:30 AM	2	3	4	5
6	7	8	9 Full-term courses: Last day to withdraw with "W"	10	11	12
13	14	15	16	17	18 2 nd seven-week courses: Last day to declare P/D/F or withdraw with a "W"	19
20	21	22	23 Thanksgiving Break begins at 1:35 PM Shortened classes all day	24 Thanksgiving Break	25 Thanksgiving Break	26 Thanksgiving Break
27 Thanksgiving Break Library Opens At 6:30 PM	28 Classes Resume 7:45 AM	29	30	<div style="border: 1px solid black; padding: 5px; display: inline-block;"> Library and Pathways Closed </div>		
				<p>To discover all the subscriptions available at Vogel Library, click on the "Databases" tab and look at either the Databases A to Z OR see what each major suggests in the Databases by Subject/Discipline.</p>		

Tips of the Month:

Two heads are better than one! Visit the Writing/ Reading/ Speaking Lab in Pathways Center.

www.wartburg.edu/pathways/wrsl.html

Click for appointments.



Need help citing sources for your paper? Don't fret. The library has an online collection of examples to help you write citations. Check out the "Citation Help Guide" link from the library's home page.

Print copies of the various citation style guides can be checked out at the 2nd floor Service Desk.

December 2011

SUNDAY	MONDAY	TUESDAY	WEDNESDAY	THURSDAY	FRIDAY	SATURDAY
<p>Stressed about \$\$ for Christmas gifts and next term's tuition? Know the difference between what you <i>want</i> and what you <i>need!</i> Give gifts of your time and from your heart.</p>				1	2	3
4	5	6 Library Closes at 1:00 AM	7 Library Closes at 1:00 AM	8 Library Closes at 1 AM	9 Fall Term Courses End	10
11 December Graduation 10:30 AM Library Closes at 1 AM	12 Final Exams	13 Final Exams	14 Final Exams	15 Final Exams	16	17 Library & Pathways Closed
Library closes at 1 AM						
18 Library & Pathways Closed	19	20	21	22	23 Library & Pathways Closed	24 Library & Pathways Closed
Library & Pathways Holiday Break Hours: M – F: 8 AM – 4:30 PM						
25	26	27	28	29	30	31
Library & Pathways Closed for Holiday Break						

Tips of the Month:

Talk with Financial Aid about money issues. Check out first-year survival guides (including money management) at Pathways Center.

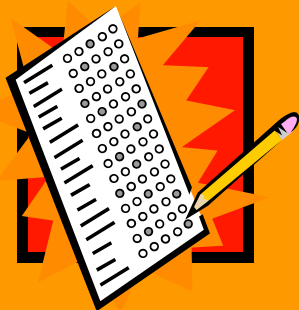


Winter break is coming up! Look at your library account to make sure that all materials you checked out Fall Term were returned or renewed by opening "My Library Account" and entering your entire student ID# as per directions. You can also renew items this way when away from campus.

January 2012

Tips of the Month:

If you don't do as well as you expected on first tests, see your adviser or go to the Pathways Center. Don't wait!



Do you have trouble thinking of search terms? Expand your vocabulary options in most databases by using the built-in thesauri. Many include a "thesaurus" or have recommended "subject terms" to suggest effective keywords. Look for this feature in the menu bar.

SUNDAY	MONDAY	TUESDAY	WEDNESDAY	THURSDAY	FRIDAY	SATURDAY
--------	--------	---------	-----------	----------	--------	----------

Results count! If you try, a professor will be more willing to help, but effort alone will not substitute for results in your final grade. Grades are based primarily on tests and papers.

Extra credit often is NOT an option in college courses.

This month, you can pick up applications for paraprofessional positions: RA, CAP mentor, Pathways Peer, etc.

1 Library & Pathways Closed	2 Library & Pathways Closed	Library & Pathways Holiday Break Hours: M – F: 8 AM – 4:30 PM			6	7 Library & Pathways Closed
8 Library & Pathways Closed	9 Winter Term Classes Begin	10	11	12 1 st seven-week courses: Last day to drop w/o "W" or to add	13	14
15	16 Martin Luther King, Jr. Day: Shortened Classes	17 Full-term courses: Last day to drop without a "W" or to add	18	19	20	21
22	23	24	25	26	27	28

You just found information about a journal article or book that looks perfect but it is not owned by Wartburg's library? You can order items from other libraries with ILLiad. Sign up for a free interlibrary loan account (ILLiad) under the "Services" drop-down menu on the library's home page. Did you notice that this service is FREE?

February 2012

SUNDAY	MONDAY	TUESDAY	WEDNESDAY	THURSDAY	FRIDAY	SATURDAY
Finding information is easy. Finding GOOD information is harder. To locate scholarly information: 1) Look in a reputable place, like the library catalog or the databases recommended in a Research by Discipline guide. 2) Use an evaluation tool like PATS (purpose, authority, timeliness, scope) to check indicators of quality.			1 1 st Seven-week courses: Last day to declare P/D/F or withdraw with a "W"	2	3	4
5	6 Incompletes for Fall 2011 due to instructors	7	8	9	10	11
12	13	14	15	16	17	18
19	20	21 Convocation 11:30 AM 1 st Seven-week courses end	22 Ash Wednesday Service 10:00 AM 2 nd Seven-week courses begin	23	24 Winter Break Begins 5:35 PM	25 Winter Break Library and Pathways Closed
26 Winter Break Library and Pathways Closed	27 Winter Break	28 Winter Break	29 Winter Break	The library's catalog leads you to books, DVDs, CDs, and other materials in Vogel Library. To find new titles that the library has acquired, click on "What's New @ Vogel Library" from the library's home webpage. New items are displayed in a special section on 1 st floor.		
<div style="border: 1px solid black; padding: 5px; display: inline-block;"> Library & Pathways Winter Break Hours: M - F: 8 AM – 4:30 PM </div>						

Tips of the Month:

Do you get nervous before taking a test? See Kelly Beck, Pathways Associate for Testing and Advising or talk with a counselor about test anxiety.



College tests are different from high school. Tests may be infrequent and cumulative. YOU need to organize material to prepare for the test. Do NOT count on studying *just* the night before the exam!

- Start studying five days before an exam
- Go to SI sessions
- Form a study group
- Use flash cards or time lines

March 2012

Tips of the Month:

Pathways/Vocation and Mentoring staff or those in the Heath & Wellness Center, Counseling Services, Residential Life, & Campus Ministry are here to help you find out who you are and how to make wise choices.



Working on a group project and need space to spread out and collaborate? Utilize the library's group study rooms on the 3rd floor. No reservations are needed & all rooms have whiteboards. Markers can be checked out at the 2nd floor Service Desk.

SUNDAY	MONDAY	TUESDAY	WEDNESDAY	THURSDAY	FRIDAY	SATURDAY
<p>Are you in the right major? What can you do with a major in _____? Are you taking courses that will count toward graduation requirements? Do your courses count toward or complement your major and/or give you a well-rounded experience? Will travel abroad or to Wartburg West fit into your schedule?</p>				<p>1 Winter Break Library & Pathways Winter Break Hours</p>	<p>2 Winter Break Library & Pathways Winter Break Hours</p>	<p>3 Winter Break Library & Pathways Closed</p>
<p>4 Winter Break Library Opens At 6:30 PM</p>	<p>5 Classes Resume 7:45 AM 2nd seven-week course: last day to drop w/o "W" or to add Full-term courses: Last day to declare P/D/F</p>	<p>6</p>	<p>7</p>	<p>8</p>	<p>9</p>	<p>10</p>
<p>11</p>	<p>12 3Y/4Y student registration for 2012-2013</p>	<p>13 3Y/4Y student registration for 2012-2013</p>	<p>14</p>	<p>15</p>	<p>16</p>	<p>17</p>
<p>18</p>	<p>19 Full-term courses: Last day to withdraw with a "W" 2Y student registration for 2012-2013</p>	<p>20 2Y student registration for 2012-2013</p>	<p>21</p>	<p>22</p>	<p>23 2nd 7-week course: Last day to declare P/D/F or withdraw with a "W"</p>	<p>24</p>
<p>25</p>	<p>26 1Y student registration for 2012-2013</p>	<p>27 1Y student registration for 2012-2013</p>	<p>28</p>	<p>29</p>	<p>30</p>	<p>31</p>

April 2012

SUNDAY	MONDAY	TUESDAY	WEDNESDAY	THURSDAY	FRIDAY	SATURDAY
1	2	3	4	5 Easter Break Begins at 5:35 PM	6 Easter Break	7 Easter Break
8 Easter Sunday Easter Break	9 Easter Break	10 Classes Resume at 7:45 AM	11 RICE DAY Library Closes at 1:00 AM	12 Convocation 11:30 AM Library Closes at 1:00 AM	13 Winter Classes End 5:35 PM	14
15	16 Final Exams	17 Final Exams	18 Final Exams	19 Final Exams	20 Library and Pathways Closed	21 Library and Pathways Closed
Library closes at 1 AM						
22 Library and Pathways Closed	23 Tour Week	24 Tour Week	25 Tour Week	26 Tour Week	27 Tour Week	28 Tour Week Library and Pathways Closed
Library & Pathways Tour Week Hours: M – F: 8 AM - 4:30 PM						
29 Tour Week Library and Pathways Closed	30 May Term Classes Begin 7:30 AM	RICE (Research, Internship, and Creative Endeavor Day) will be celebrated campus-wide on April 11. This is a specially designated day where students, faculty, and staff will share exciting research projects, creative activities, and special examples of academic excellence. Join in celebrating learning at Wartburg by attending the wide variety of events scheduled on this special day.				

Tips of the Month:

To discuss questions about career choices and majors, check out the Pathways & Career Services websites, visit Pathways, and/or talk with your academic advisor.



Rub Bill's head at the library's 2nd floor Service Desk for good luck on final projects and exams.

May 2012

Tips of the Month:

Need a summer job or internship? Explore *KnightLink*, a resource from Career Services that lists opportunities for campus and summer employment, internships, and service learning.

www.wartburg.edu/knightlink



Vogel Library continues to be open all summer (excluding weekends) for research opportunities and leisure reading.

See the library webpage for summer hours.

SUNDAY	MONDAY	TUESDAY	WEDNESDAY	THURSDAY	FRIDAY	SATURDAY
Will your summer job help you reach your educational goals as well as earn \$?		1	2 Last day to drop without a "W" or to add	3	4	5
6	7	8	9	10	11 Last day to drop with a "W"	12
13	14	15	16	17	18	19
20	21	22	23 May Term Classes End	24 May Term Final Exams	25	26 Library Closed
27 Baccalaureate/ Commencement Library Closed	28 Memorial Day Library Closed	29	30	31	<p>Did you know that the library hosts two special collections?</p> <ul style="list-style-type: none"> •The Wartburg College Archives contains college history. •The Archives of Iowa Broadcasting preserves the state's radio & television history. 	

June 2012

SUNDAY	MONDAY	TUESDAY	WEDNESDAY	THURSDAY	FRIDAY	SATURDAY
Ready for some summer reading? Visit your local public library. They specialize in fiction books to read for leisure as well as non-fiction for continued learning. Read for fun instead of grades!					1	2
3	4 Summer Session 1 Begins	5	6	7	8	9
10	11	12	13	14	15	16
17	18	19	20	21	22	23
24	25	26	27	28	29	30

Tip of the Month:

When reading non-fiction, be information literate. Ask yourself the following:

- Who is the author and what credentials does s/he have?
 - Who is the intended audience?
 - What is the purpose?
 - Is there bias?
- Is the info accurate and can it be backed up by credible sources?



July 2012

Tip of the Month:

Library assistance is available all summer long! Chat with us using Meebo or email questions to asklibrarian@wartburg.edu

Both services are found on the right side of the library's home page.

Our phone number is 319-352-8500.



SUNDAY	MONDAY	TUESDAY	WEDNESDAY	THURSDAY	FRIDAY	SATURDAY
1	2	3	4 Library & Pathways Closed	5 Summer Session 1 Ends	6 Final Exams	7
8	9 Summer Session 2 Begins	10	11	12	13	14
15	16	17	18	19	20	21
22	23	24	25	26	27	28
29	30	31	WorldCat helps you find books and other materials at libraries all over the world. Take a look! The link is under "Databases" in the A to Z alphabetical list.			

August 2012

Tips of the Month:

Don't fall into the sophomore slump! Be a mentor for CAP. Call Michael Gleason @ Pathways to find out how to help next year's first-year students make a smooth transition through the College Achievement Program.



Remember: Get to know your Wartburg librarians! Their job is to help you to become a successful and information literate learner.

SUNDAY	MONDAY	TUESDAY	WEDNESDAY	THURSDAY	FRIDAY	SATURDAY
Extra Tip: Have you ever considered becoming a librarian as a career option? Think about taking an one-credit independent study course in librarianship your junior or senior year. See one of the librarians if interested in learning more.			1	2	3	4
5	6	7	8 Summer Session 2 Ends	9 Final Exams	10	11
12	13	14	15	16	17	18
19	20	21	22	23	24	25
26	27	28	29	30	31	

To keep in-the-know about other important dates on campus:

- Read the PAGE, a publication that is sent to your e-mail Monday, Wednesday and Friday during the school year
- View Wartburg's Master Calendar: <http://www.wartburg.edu/cal>
- Read the *Trumpet*, Wartburg's weekly newspaper, published by students
- Use your Wartburg Planner
- Check your e-mail. Pathways, your advisor and other offices will send you e-mails reminding you of resources and events on campus

Welcome to Wartburg College! Enjoy your first year!

Pathways Center Office Hours:

Weekdays: 8 AM - 4:30 PM

Sunday and Tuesday Evenings: 7 - 9 PM

319-352-8615

Writing/Reading/Speaking Lab Hours:

Mondays –Thursdays: 9 - 11 AM and 1 - 4 PM

Fridays: 9 -11 AM

Sunday – Thursday Evenings: 6 - 10 PM

Saturdays: 1 - 3 PM

319-352-8552

Counseling Services Hours:

Weekdays: 8 AM - 4:30 PM

Monday and Thursday Evenings: 4:30 - 8 PM

319-352-8596

Pathways Center Staff:

Dr. Vicki Edelnant, Pathways Center Director

Phone: 352-8615

vicki.edelnant@wartburg.edu

Derek Solheim, Pathways Center Associate Director/Career Services

Phone: 352-8425

derek.solheim@wartburg.edu

Jette Irgens, Pathways Associate for Writing/Reading/Speaking Lab

Phone: 352-8410 (office)

jette.irgens@wartburg.edu

Michael Gleason, Pathways Associate for Vocation and Mentoring

Phone: 352-8651

michael.gleason@wartburg.edu

Kelly Beck, Pathways Associate for Testing and Advising

Phone: 352-8230

kelly.beck@wartburg.edu

Stephanie Newsom, Counseling Services Director

Phone: 352-8539

stephanie.newsom@wartburg.edu

Molly Wertz, Counselor

Phone: 352-8632

molly.wertz@wartburg.edu

Vogel Library School Year Hours:

Mondays – Thursdays: 7:30 AM – Midnight

Fridays: 7:30 AM – 5 PM

Saturdays: 10 AM - 5 PM

Sundays: 1 PM – Midnight

(Hours may vary during summers, holidays and breaks: check the library's web page for updates)

Circulation and Service Desk: 319-352-8500

Renewals and Interlibrary Loan: 319-352-8500

Information and Reference Desk: 319-352-8506

College Archives: 319-352-8457

Konditorei: 319-352-8505

Vogel Library Librarians:

Chris Schafer, College Librarian and Library Director

Phone: 352-8462

christine.schafer@wartburg.edu

Megan Conley, Scientific Literacy Librarian

Phone: 352-8696

megan.conley@wartburg.edu

Karen Lehmann, Information Literacy Librarian

Phone: 352-8460

karen.lehmann@wartburg.edu

Eric Leong, Information Literacy Librarian

Phone: 352-8448

eric.leong@wartburg.edu

Pam Madden, Cataloging Librarian/Archivist

Phone: 352-8461

pamela.madden@wartburg.edu

Alan Mask, Systems Librarian

Phone: 352-8244

alan.mask@wartburg.edu

Jill Westen, Information Literacy Librarian

Phone: 352-8348

jill.westen@wartburg.edu