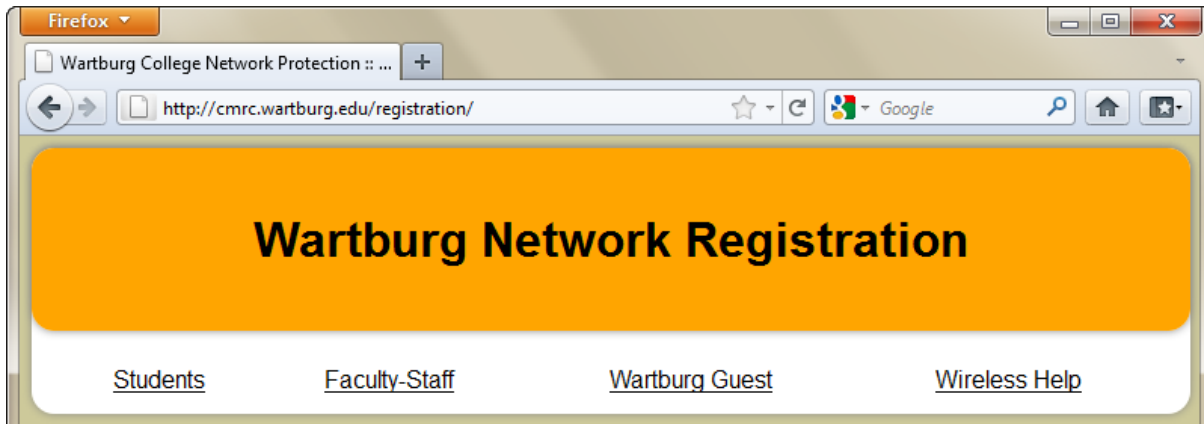


## Registration Process

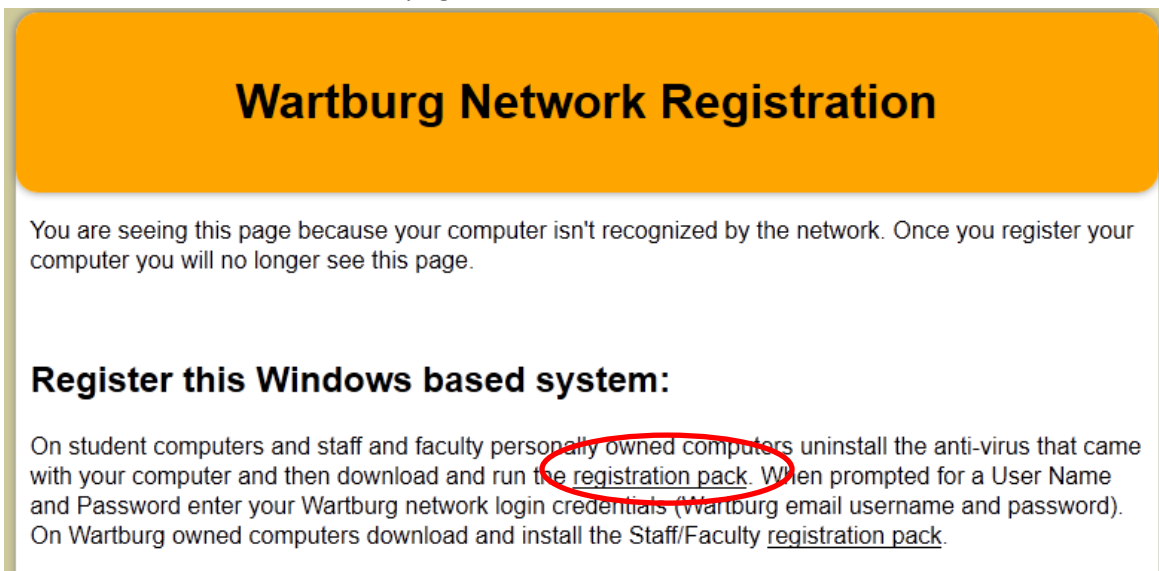
After you have connected to the WC\_Wireless network, open a web browser to connect to the internet and begin the registration process.

Note: If you are running an operating system other than a Microsoft Windows version you may see slightly different options, this is normal just follow the on screen instructions.

After the Wartburg Registration page loads, select either Students or Faculty-Staff from the selections.

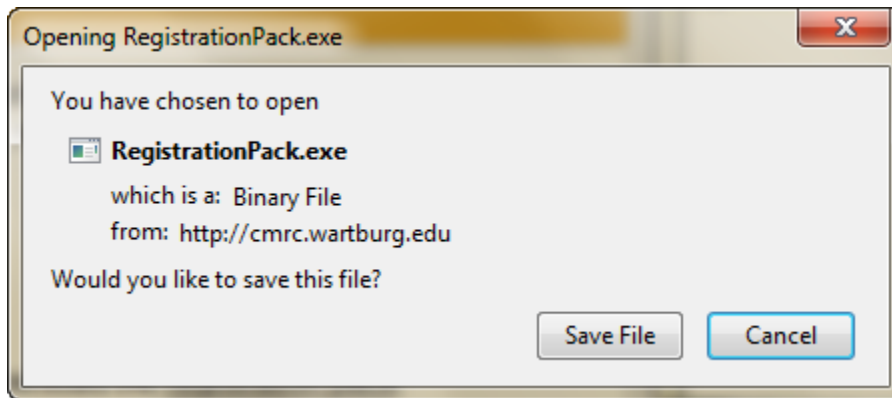


You will then be prompted with an instruction page. You will be notified to uninstall the current anti-virus software on your computer. After you have removed your current anti-virus software you can proceed by clicking on the Registration Pack link, this will begin the installation of the provided anti-virus software and the network security agent.

A screenshot of an instruction page titled 'Wartburg Network Registration'. The page contains the following text: 'You are seeing this page because your computer isn't recognized by the network. Once you register your computer you will no longer see this page.' Below this is a section titled 'Register this Windows based system:' with instructions: 'On student computers and staff and faculty personally owned computers uninstall the anti-virus that came with your computer and then download and run the registration pack. When prompted for a User Name and Password enter your Wartburg network login credentials (Wartburg email username and password). On Wartburg owned computers download and install the Staff/Faculty registration pack.' The words 'registration pack' are circled in red in the original image.

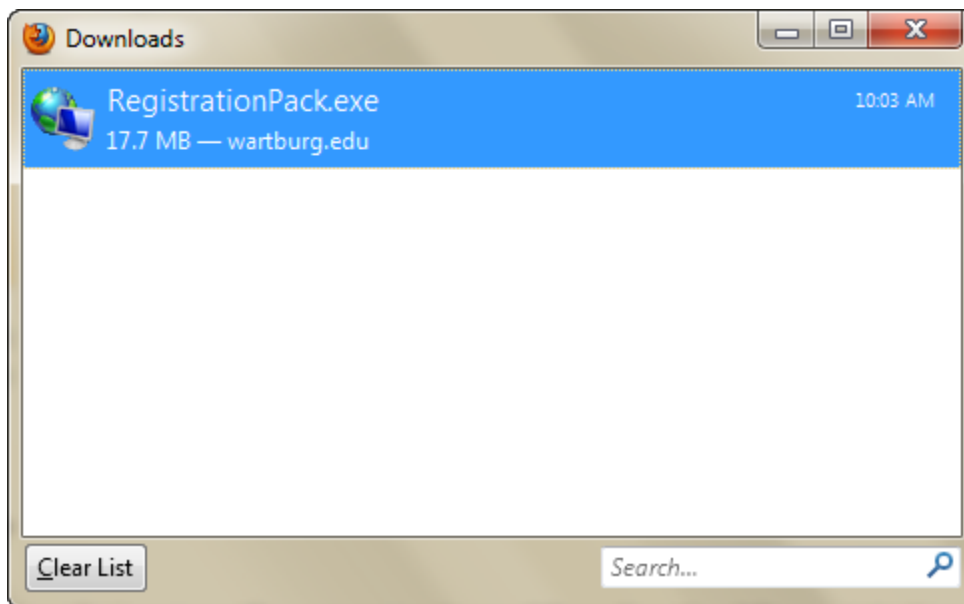
Next download the RegistrationPack.exe file and run it.. Depending on what web browser you are using you may have different results, the screen shots used here are from the Firefox web browser.

Click the Save File button to download the file.

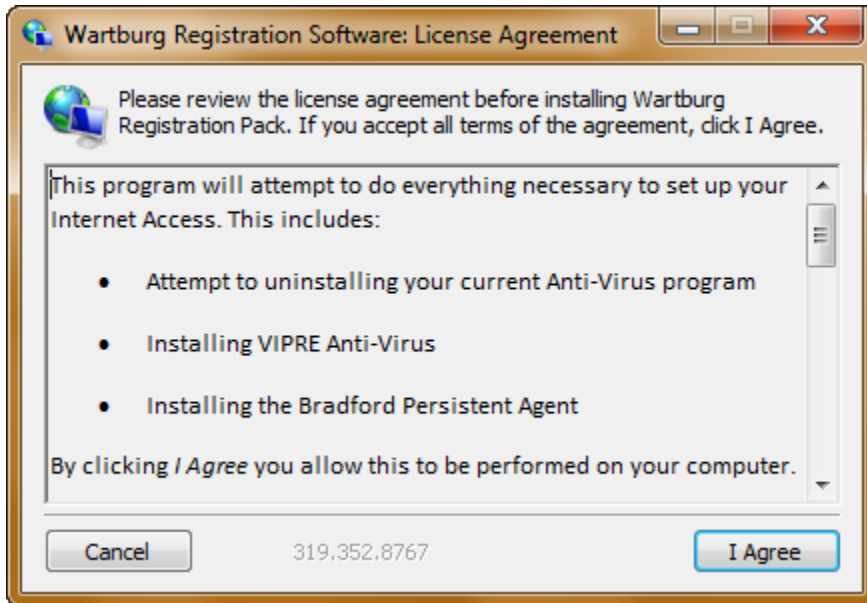


Once the file is downloaded double click the RegistrationPack.exe file to start the installation.

*Note: If you are prompted with the User Account Control window warning you that this file is not trusted, select allow to continue the installation.*

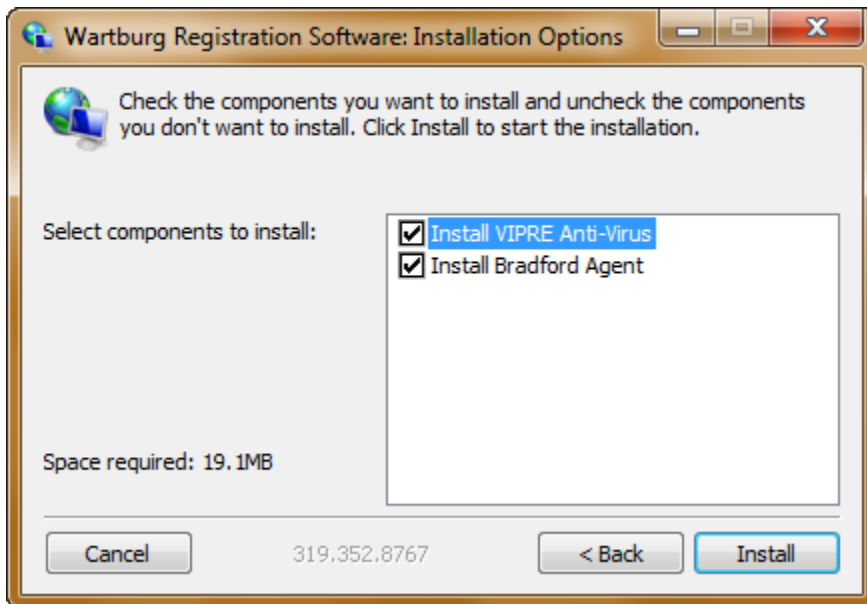


Please read the License Agreement information and additional instructions then click I Agree.

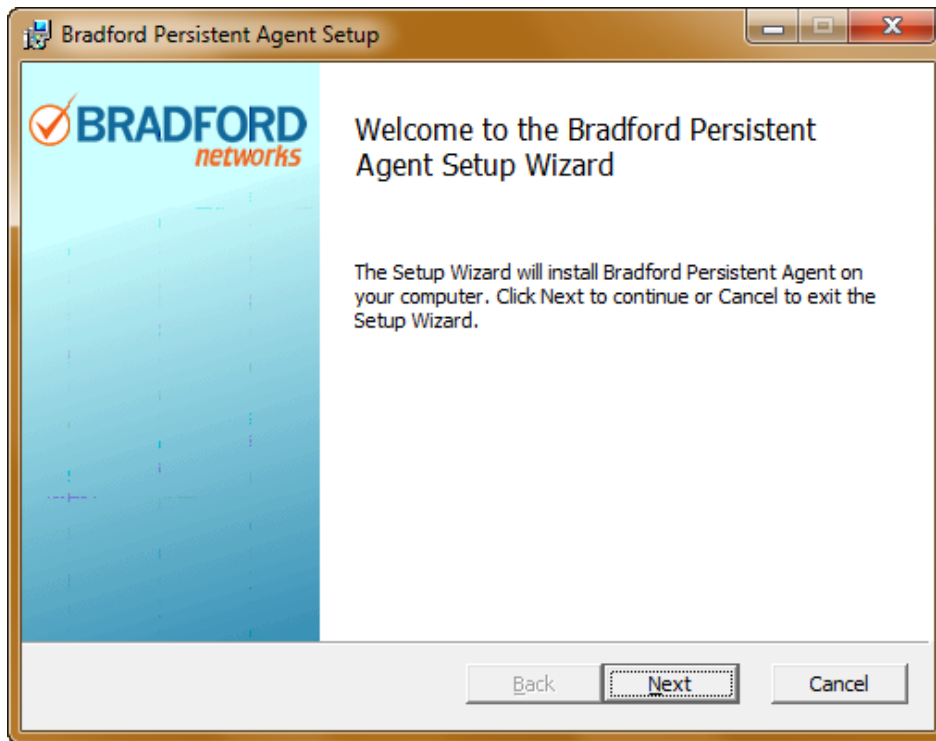


Leave both items selected and Click Install.

*Note: This process could take 5-10 min depending on the speed of your computer.*



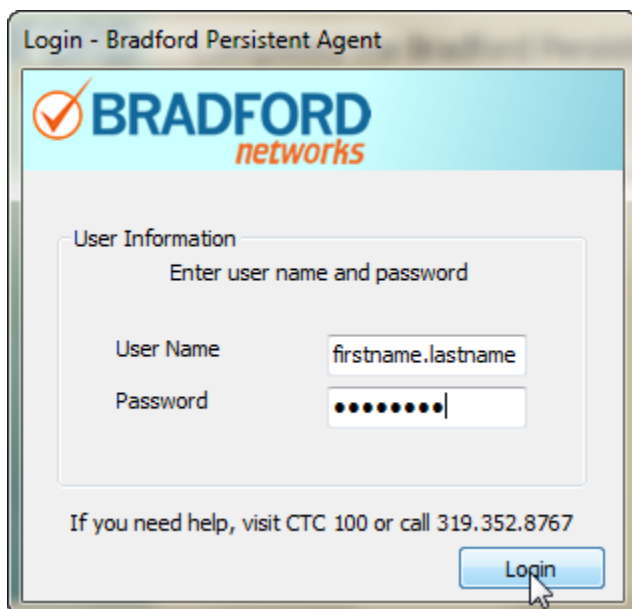
Click Next.



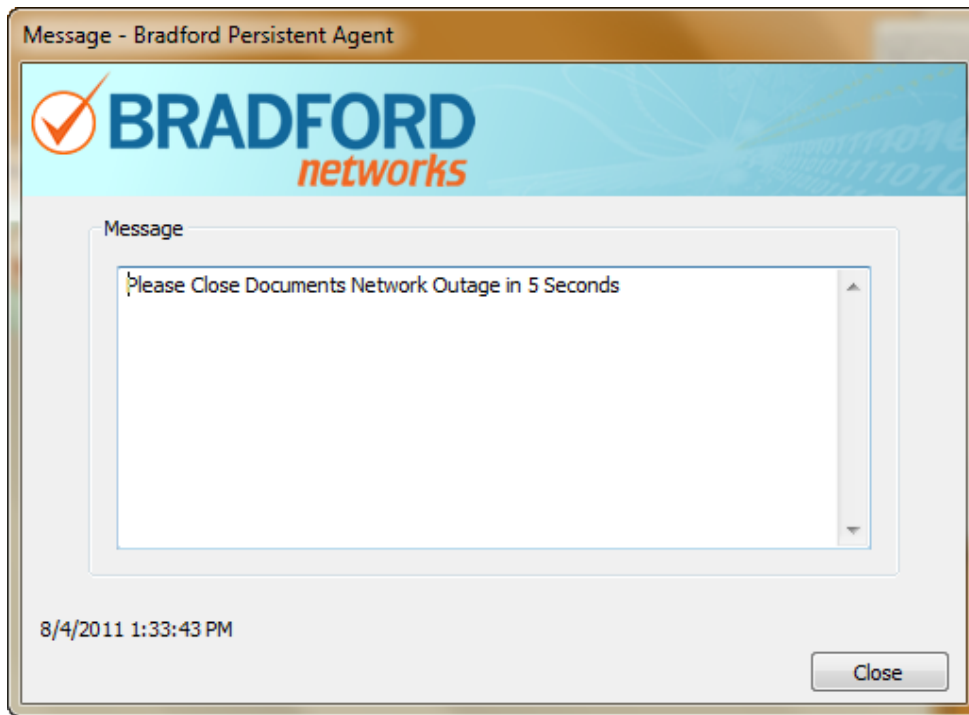
Enter your Wartburg network login credentials, click Login

User Name = *firstname.lastname*

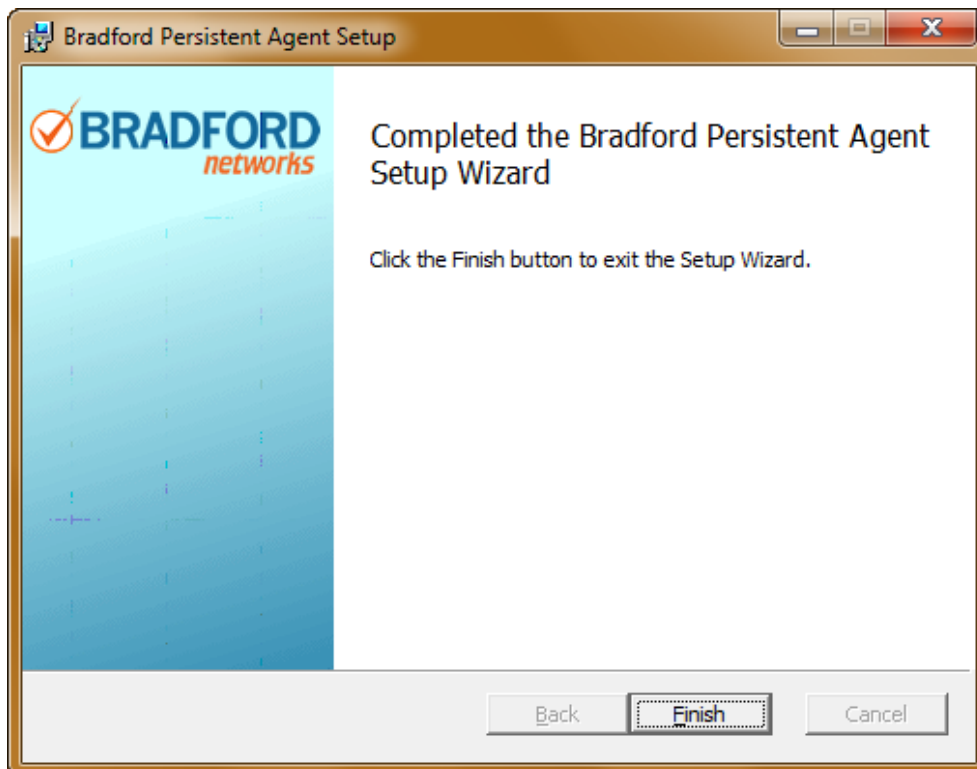
Password = *password*



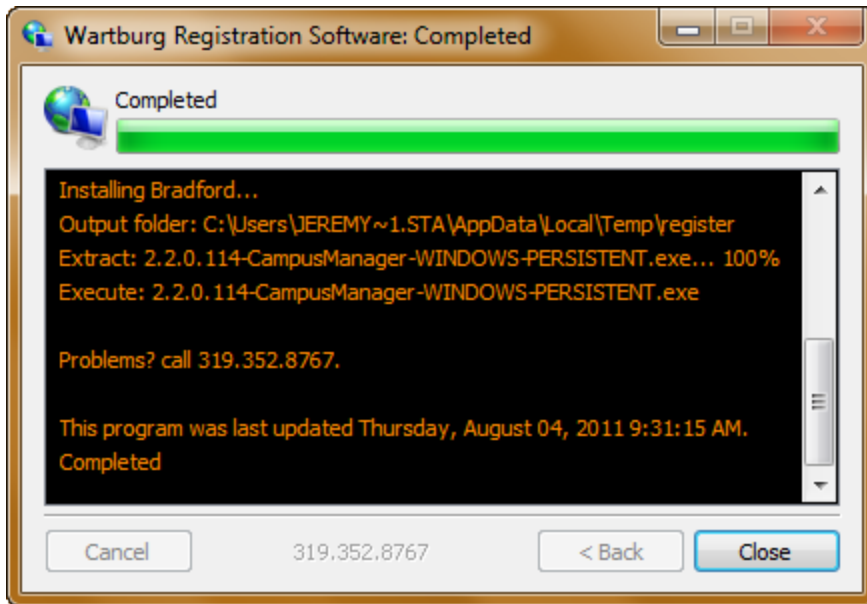
Click Close.



Click Finish.



Click Close.



Click Reboot to reboot your computer and finish the registration and installation processes.

