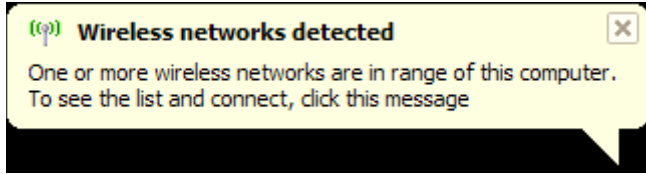
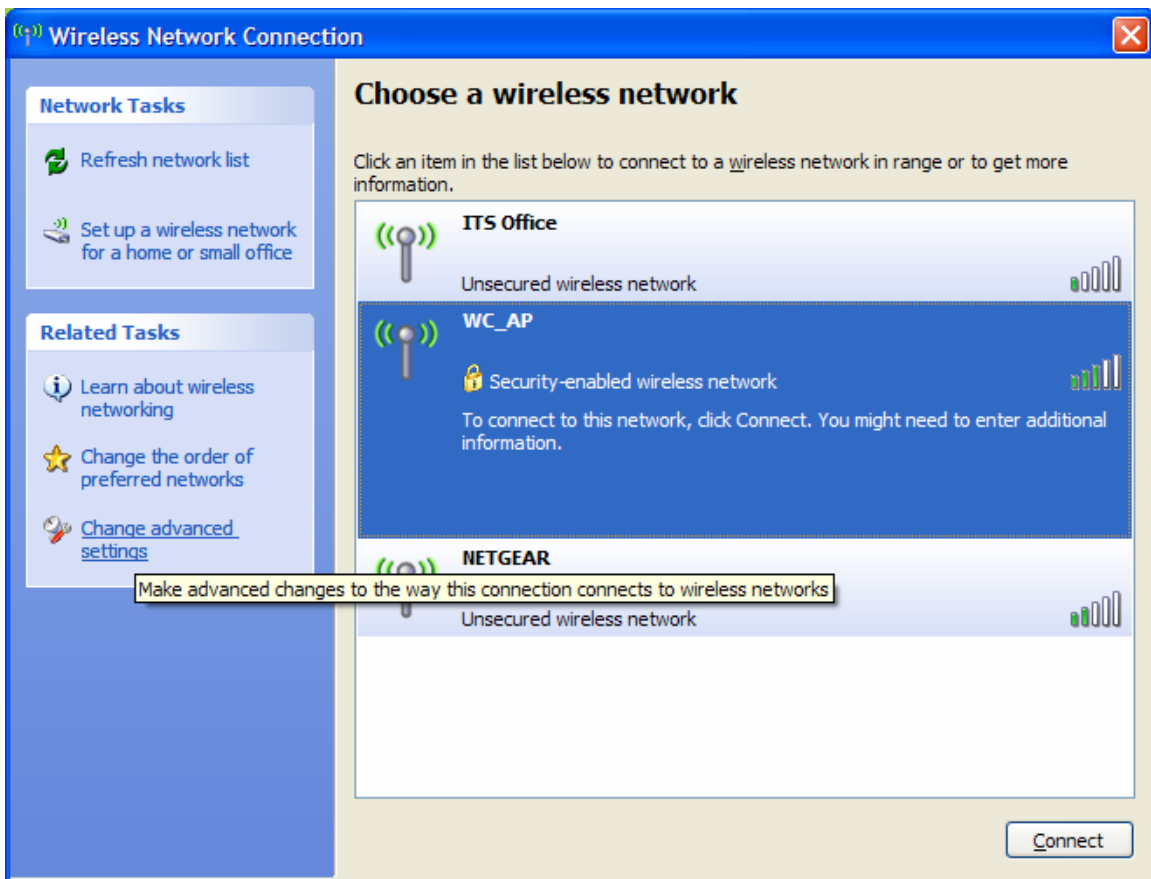


XP Wireless Setup Instructions

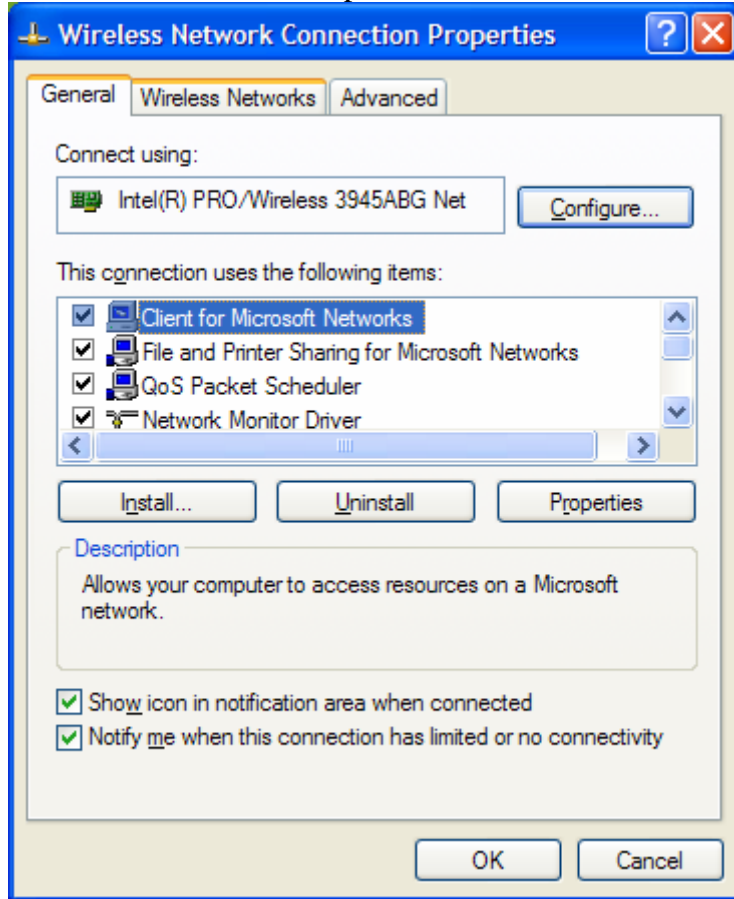
1. After logging on to your computer, Right click on the Wireless network connection in the System Tray in the lower right corner of your screen and click on “View Available Wireless Networks”. It will have three “waves” coming out of it.



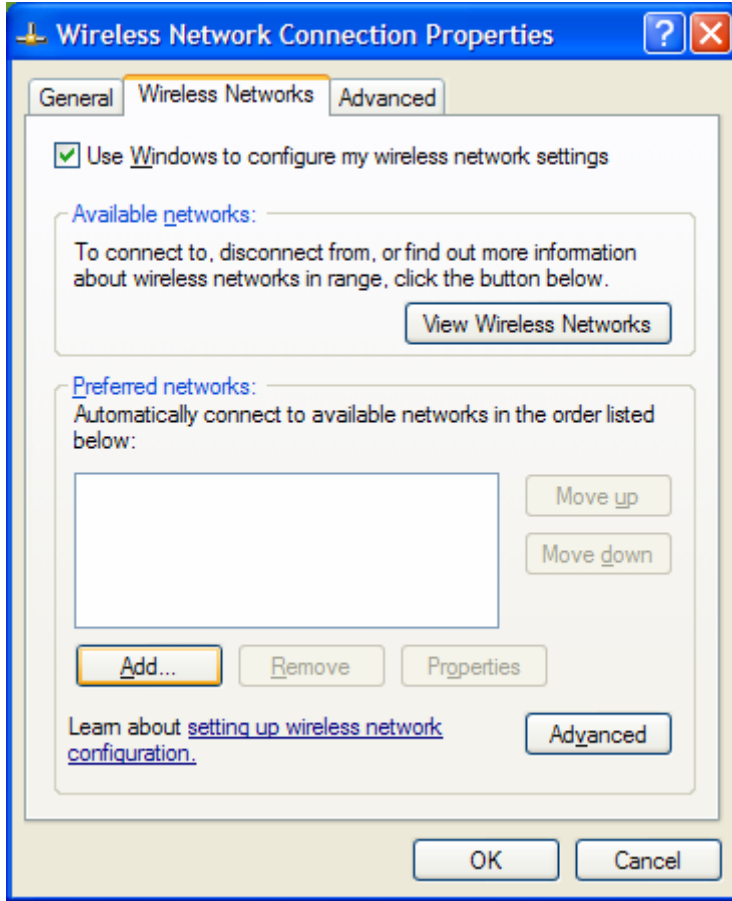
2. Click on “Change advanced settings”.



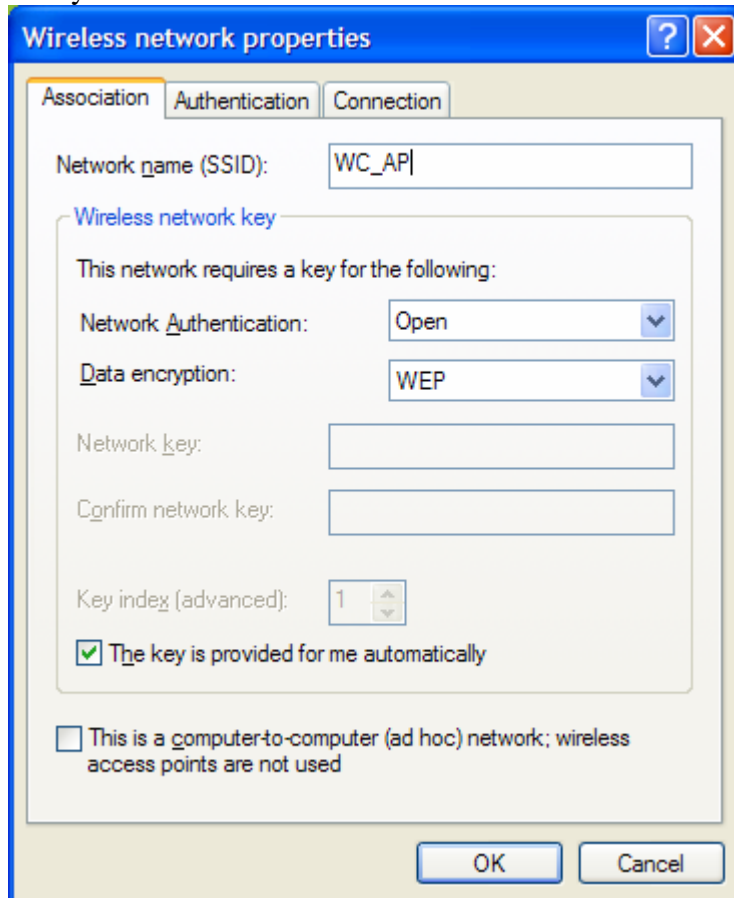
3. When the “Wireless Network Connection” properties pops up, click on the “Wireless Networks” tab at the top.



4. Make sure the “Use Windows to configure my wireless networks settings” box is checked. Click on “Add...”.



5. Under “Network Name (SSID):” enter WC_AP. “Network Authentication” should say “Open”. “Data encryption” should be “WEP”. “The key is provided for me automatically” should be checked as well.

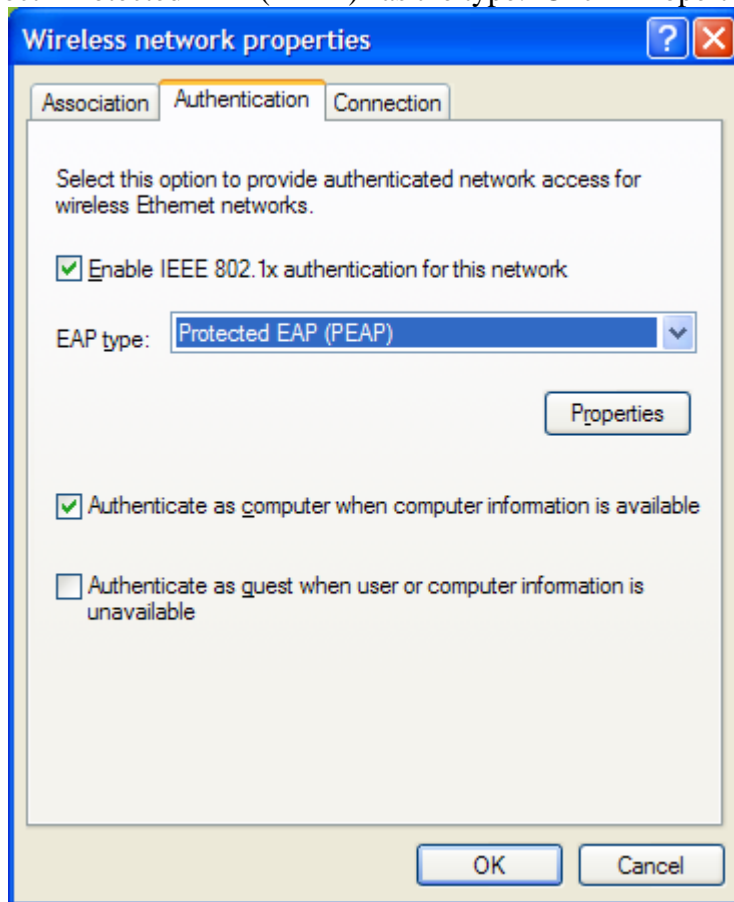


The image shows a screenshot of the "Wireless network properties" dialog box, specifically the "Association" tab. The dialog box has a blue title bar with a question mark and a close button. Below the title bar are three tabs: "Association", "Authentication", and "Connection". The "Association" tab is selected. The main content area contains the following fields and options:

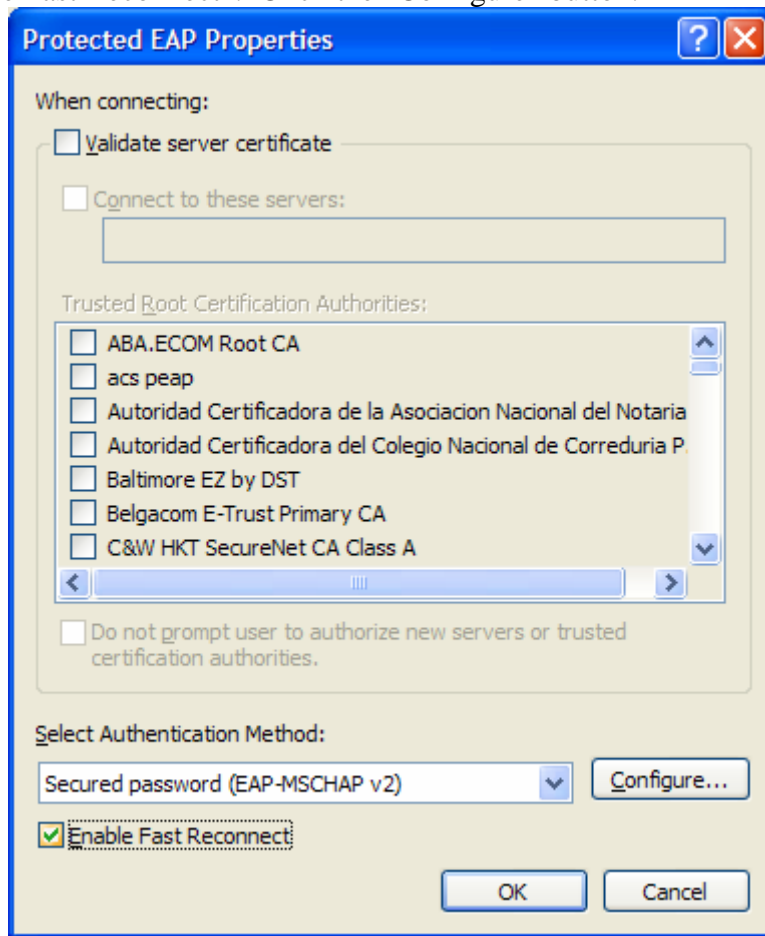
- Network name (SSID):** A text box containing "WC_AP".
- Wireless network key:** A section header.
- This network requires a key for the following:** A label.
- Network Authentication:** A dropdown menu set to "Open".
- Data encryption:** A dropdown menu set to "WEP".
- Network key:** An empty text box.
- Confirm network key:** An empty text box.
- Key index (advanced):** A spinner box set to "1".
- The key is provided for me automatically**
- This is a computer-to-computer (ad hoc) network; wireless access points are not used**

At the bottom of the dialog box are two buttons: "OK" and "Cancel".

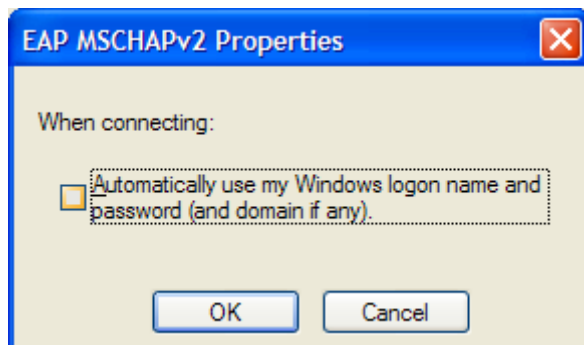
6. Under the “Authentication” tab, make sure “Enable IEEE 802.1x authentication for this network” is checked. Also check the box to “Authenticate as computer when computer information is available”. Finally click on the “EAP type:” pull down menu and select “Protected EAP (PEAP)”. Click “Properties”.



7. Under the “Protected EAP Properties” box uncheck the box next to “Validate server certificate”. On the “Select Authentication Method:” pull down menu make sure that “Secured password (EAP-MSCHAP v2)” is selected. Also check the box next to “Enable Fast Reconnect”. Click the “Configure” button.

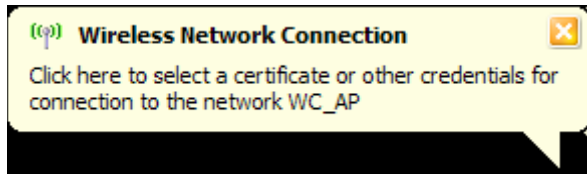


8. In the “EAP MSCHAPv2 Properties” box, uncheck the box next to “Automatically use my Windows logon name and password (and domain if any).” Click “OK”.



9. Click on “OK” on the “Protected EAP Properties” box.
10. Click on “OK” on the “Wireless Network Properties” box.
11. Finally click on “OK” on the “Wireless Network Connection Properties” box.

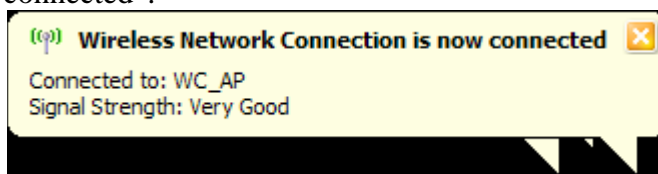
12. When the “Wireless Network Connection” bubble pops up, click on it once.



13. Enter your credentials.



14. When you are connected you should receive a bubble saying “Wireless Network is now connected”.



15. Finished! If you experience any problems, try rebooting to refresh the preferences that have just been modified. Depending on your location to the wireless access point, you may need to reenter your credentials when you are in range again.