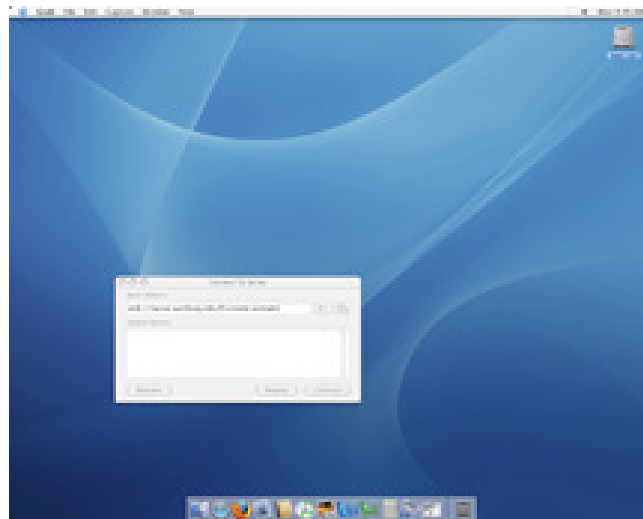


Connecting to Personal Drive (K:\) in OS X

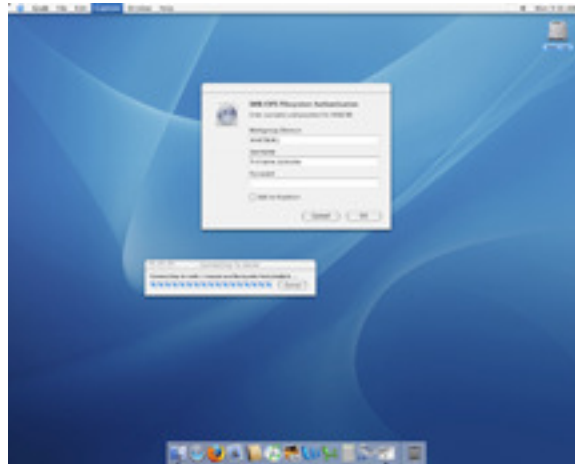
1. When you are in the finder click on the “GO” menu and then click on connect to server:



2. In the dialogue box that appears type
 - a. For Staff enter `smb://fileserver01.wartburg.edu/staff/firstname.lastname` in the server address bar:
 - b. For Faculty enter `smb://fileserver01.wartburg.edu/faculty/firstname.lastname` in the server address bar:
 - c. For Students enter `smb://fileserver01.wartburg.edu/students/firstname.lastname` in the server address bar:



3. In the next window that appears make sure that the workgroup/domain is set to WARTBURG:
4. Your username is your firstname.lastname
5. Your password is your e-mail password



6. Click OK and your Personal drive will be mapped on the desktop:

