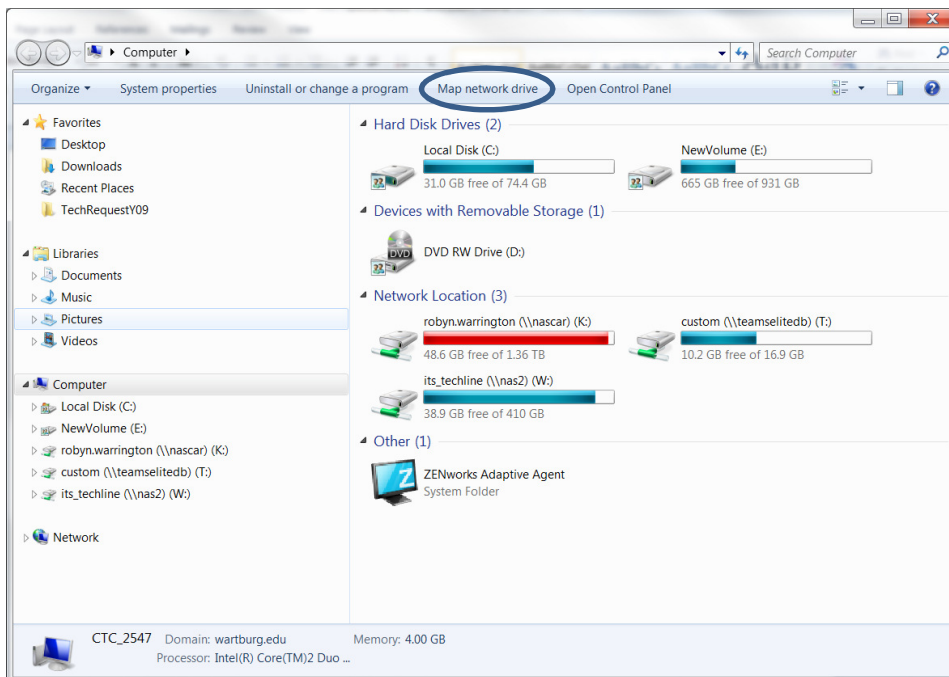


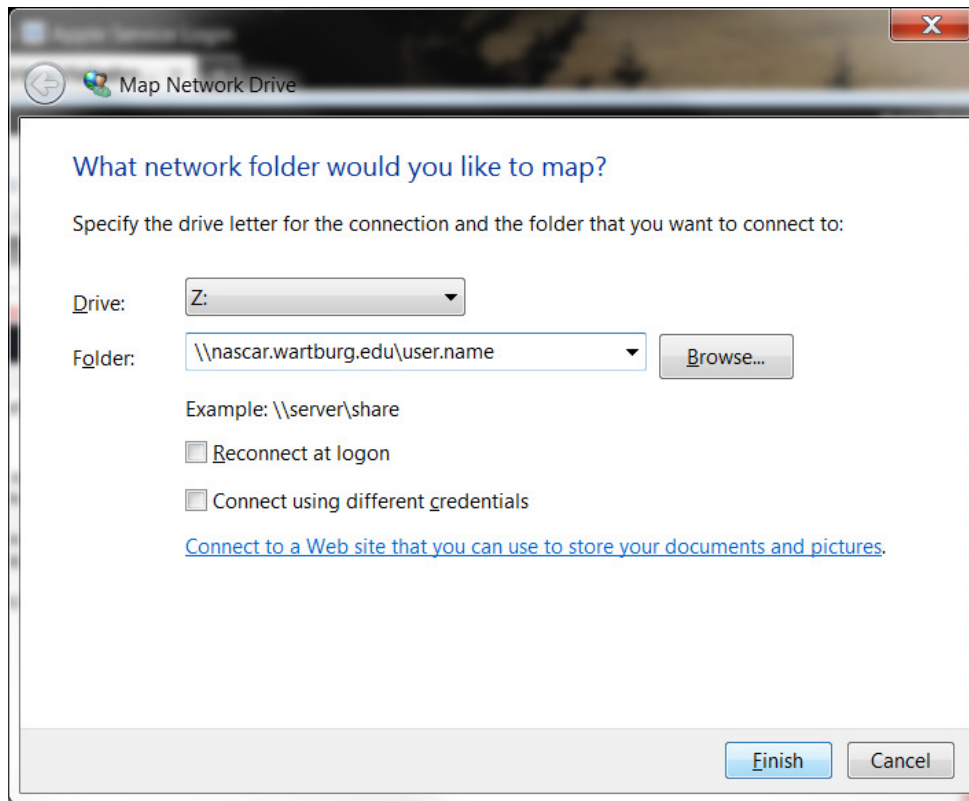
To Connect to your Nascar drive from the Resident Halls or Campus Wireless Internet access: (See Mac instruction below Windows instructions)

Click the *Start* button and choose *Computer*: (My Computer for XP users)

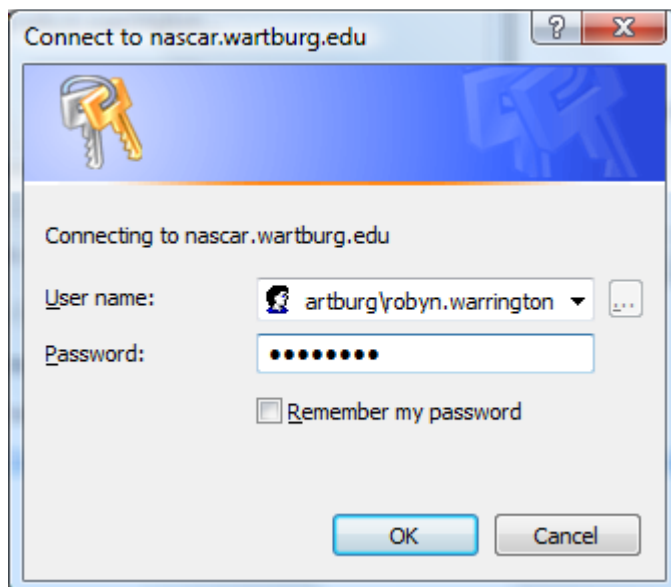
From the resulting window choose *Map network drive* under the address bar. (For XP users Choose *Map to Network Drive...* from the *Tools* menu.)



Choose any drive letter that is available from the *Drive:* drop-down menu. In the *Folder:* field key in **\\nascar.wartburg.edu\user.name** where user.name is your network username. Click **Finish**.



An authentication window will appear. To authenticate to your Nascar drive key in **wartburg\user.name** where user.name is your network username in the *User name:* field and key in **your network password** in the *Password:* field. Click **OK**.



For Mac users:

On the *Finder* menu bar from the *Go* menu choose **Connect to Server...**

In the resulting window key in **smb://nascar.wartburg.edu/user.name** where user.name is your network username.

In the authentication window be sure **Registered User** is selected, key in your network *username* and *password* in the appropriate field. Click the **Connect** button.